

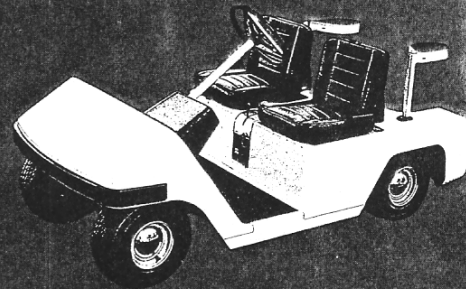
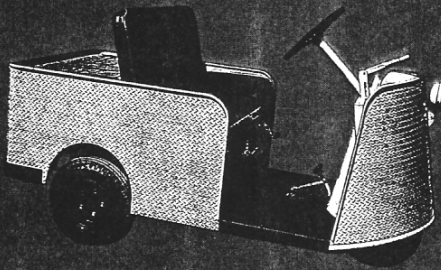
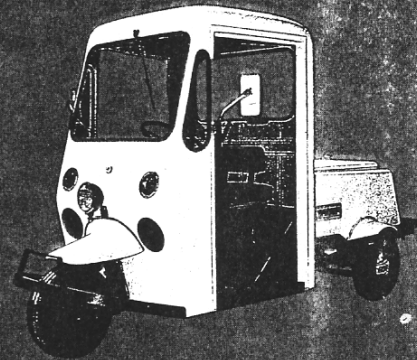
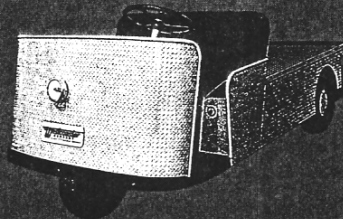
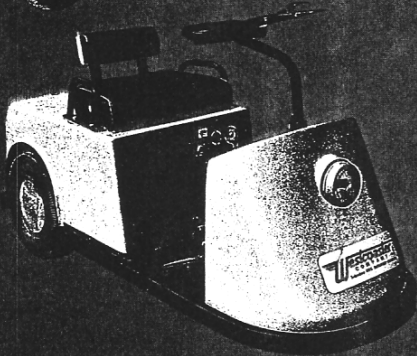
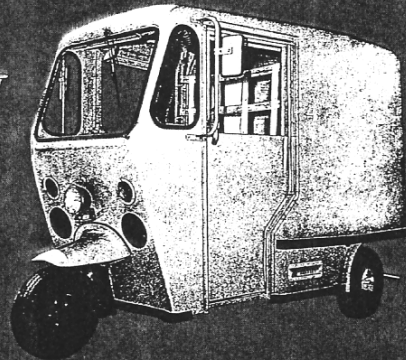
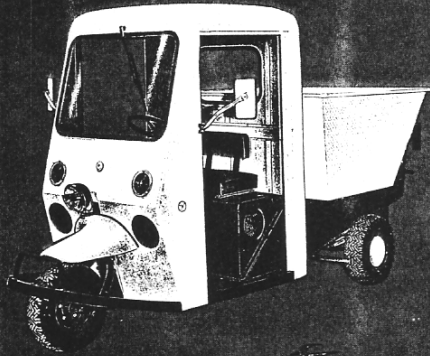
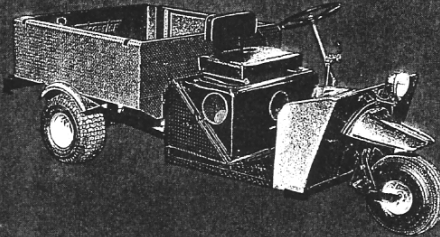
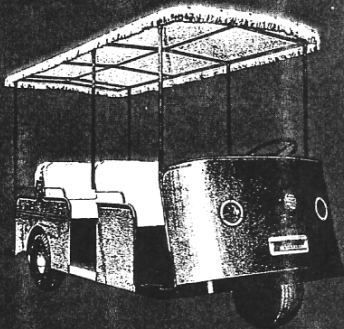
Westcoaster

Subsidiary of Otis Elevator Company

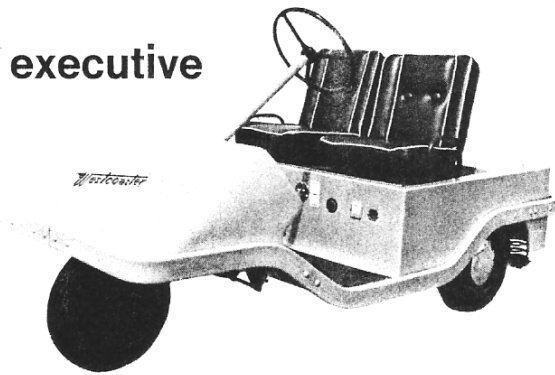
P. O. Box 8600, Stockton, Calif. 95204 • (209) 948-2751

Plants in Cleveland, Ohio/West Memphis, Arkansas/and Stockton, California

full
line



executive

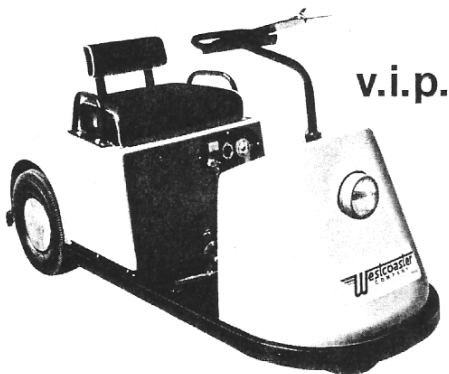


model S40E

The Executive Carrier speeds top management people around any operation quickly and quietly. Up to four people can be moved smoothly and efficiently. The short turning radius and excellent maneuverability of this vehicle allow it to slip through the most congested area.

model 190C

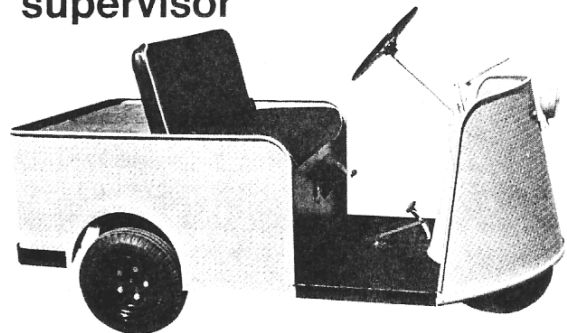
The V.I.P., a compact, highly mobile single person carrier operates at either 12 or 24 volt speed with the flip of a switch. The narrow width of the V.I.P. allows it to negotiate the narrowest doorways with ease.



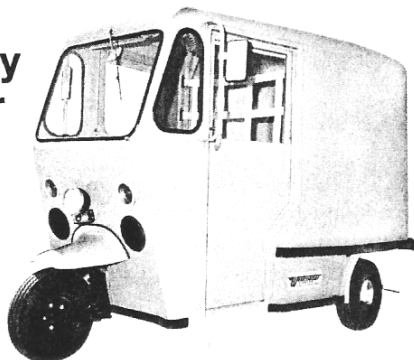
model 290S

The Supervisor is a dual purpose vehicle which carries two people and 450 lbs. of payload up as much as 30% grades. Automotive type steering enhances the efficiency of the Supervisor while enabling key personnel to move about more efficiently. An optional rear seat and step are available.

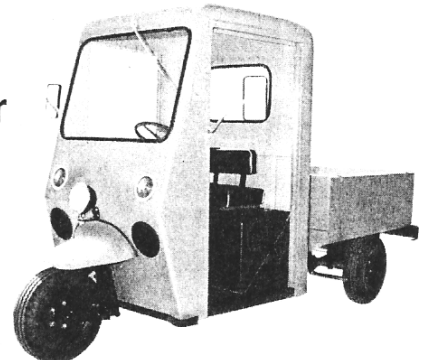
supervisor



delivery master



haul master



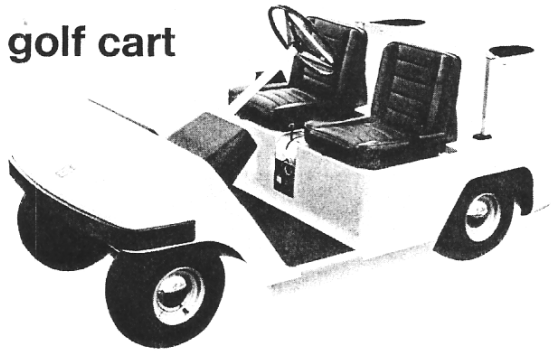
model 885

The Delivery Master is the ideal vehicle for cutting delivery costs. The lockable, large capacity cargo area can carry up to 1500 pounds of material. The dual, wide opening rear doors are made of weather tight fiberglass, as is the comfortable cab. Easy access to and from the cab through the locking sliding doors increases delivery efficiency and cuts time-costs.

model 960

The Haulmaster utility vehicle delivers up to 45 miles per gallon and climbs 15% grades with a 1000 pound payload. The short turning radius, low level loading, and ease of parking make the Haulmaster a real time and money saver.

golf cart



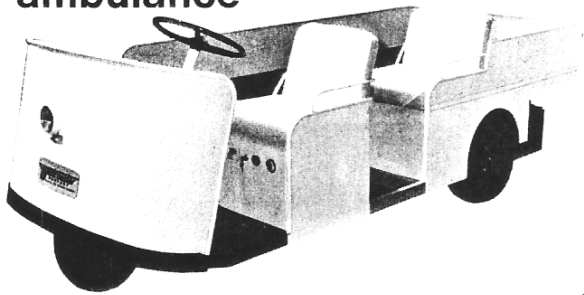
model S-71

The most modern, sophisticated Golf Cart ever! Four wheel stability, automotive steering, hypoid rear axle, heavy duty vinyl seats, an exceptionally low profile and contemporary fiberglass body all make the new S-71 the epitome of the industry. A vacuum formed plastic canopy is optional.

model 580A

The In-Plant Ambulance enables personnel to have instant access to emergency situations. At smooth, comfortable speeds of up to 10 mph the Model 580A winds its way through plant congestion and saves precious minutes — when it really counts.

in-plant ambulance



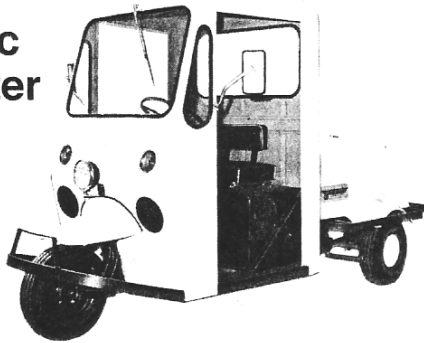
model 580F

A multi-purpose vehicle, the electric Freight Away is capable of transporting up to 1500 pounds. The unit may be modified to serve as a lube, welding, tool, or fire truck. Easy low level loading is standard with the knee high cargo deck.



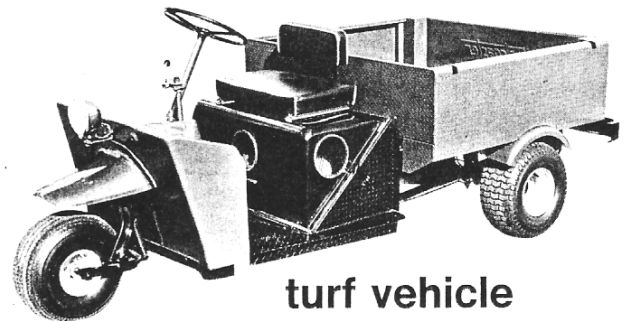
freight-away

traffic master



model 965

The Traffic Master provides so many reasons to save time and money that it's rapidly becoming the security man's favorite. Excellent visibility, access to and from the cab, a lockable storage compartment, 3 wheel maneuverability, and a top speed of 45 mph combine to bring a new dimension to plant security and traffic and meter control.



turf vehicle

model 970

The Turf Vehicle has incredible versatility. Whether utilized as a tool carrier, greens mower, irrigation supply carrier, repair vehicle or sod carrier, the Turf Vehicle will speed along with up to 1000 pounds payload. An auxiliary transmission is available with power-takeoff to operate sprayers, seeders, etc.

**General Specifications
For All Westcoaster Models**

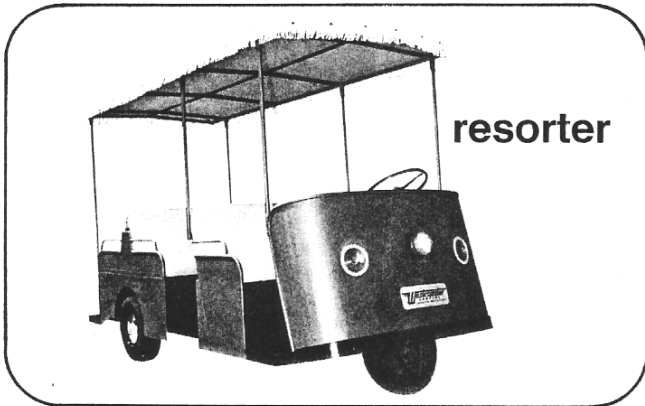
| | |
|-------------------------|---|
| Frame: | Electric welded alloy steel channel, amply braced to withstand the toughest twists and strains. |
| Body: | All bodies are carefully constructed of the finest all-welded steel and fiberglass. |
| Speeds: | Electric cars are equipped with three speeds forward and three speeds reverse. Gasoline cars are equipped with the conventional three speeds forward and one reverse. |
| Steering: | Automotive type steering is standard on all models, except #190C. |
| Batteries: | Westcoaster designs and manufactures all batteries used on its vehicles. |
| Battery Charger: | On all electric models, Westcoaster provides a built-in battery charger with a plug-in receptacle and semi-automatic time clock. |

Note: All electric units standard with headlight, taillight, horn, batteries, built-in-charger, semi-automatic time clock. (Time clock optional #190C.)

All Gas models equipped with operator's seat with back rest, rear bumper, rear shock absorbers, automotive steering, head and taillights, horn, alternator, speedometer, odometer, fuel gauge, oil pressure light, ammeter, keyed lock.

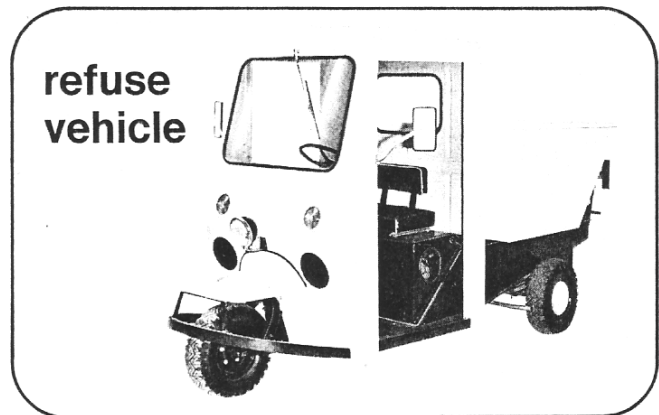
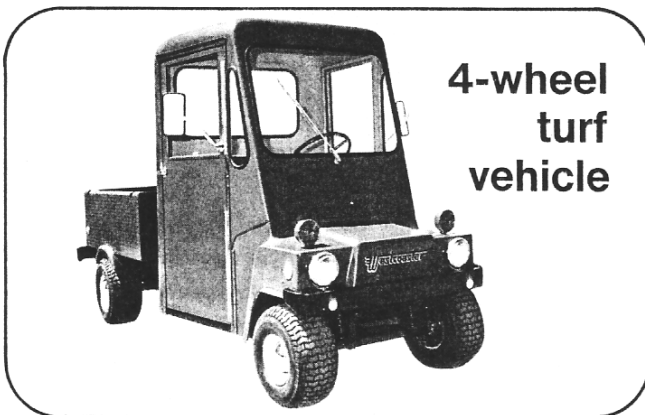
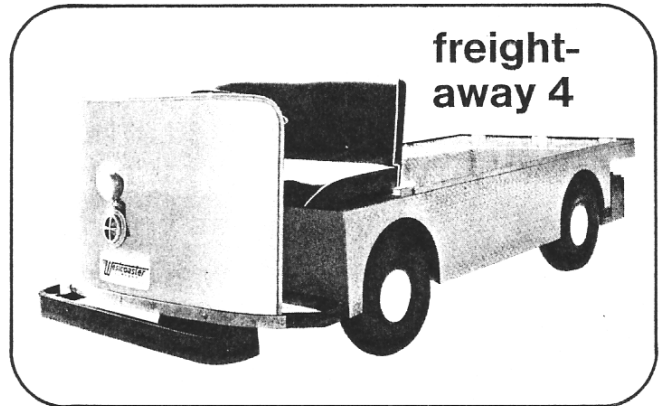
model 580 R-6/580 R-9

The Resorter — a necessity, not a luxury in today's modern resort/country club complex. Available in 6 or 9 passenger models, the Resorter scales 30% grades in canopied comfort. Its automotive type steering negotiates narrow aisles and crowded roadways easily.



model 584F

The Freight Away 4, a four wheel electric work-horse for in-plant operation. The 12 ft. turning radius, 2000 pound cargo capacity, 10 mph top speed and steel cargo deck all combine to give truly exceptional performance.



model 970-A4

Our rugged 4 wheel Turf Vehicle features an optional weathertight fiberglass cab, heavy duty steel cargo box, excellent visibility, heavy duty springs and an exceptionally rugged drive train. A real work horse to take on the toughest terrain.

model 975

Our Refuse Vehicle provides unsurpassed time-saving economies to the refuse industry. Utilized as a feeder-truck for city collection or as a refuse gatherer in parks or plants, the truck quickly and efficiently moves about in the most cramped quarters. A hydraulically actuated lift on the 1.5 cubic yard box allows the driver to dump all 1500 pounds of load without ever leaving the driver's seat.

Westcoaster Story

Westcoaster Company, since 1970 a subsidiary of Otis Elevator Company, was founded in 1946 in Stockton, California. Then called West Coast Machinery, the company's primary function was to continue existing contracts, and heavy fabrication, between the U.S. Government and Moore Equipment Company.

After designing and manufacturing tilt dozers, power control units and rough terrain fork trucks, West Coast Machinery, in the early '50's, developed one of the first electric golf carts in the United States. The production of this specific unit became the major function of the company. From the golf cart a complete line of in-plant electric vehicles was developed.

In 1958, West Coast Machinery was commissioned by the U.S. Post Office Department to develop a three wheel gasoline vehicle for mail delivery. After a test period in the South Eastern part of the United States, the company was awarded a contract to supply 3,000 units to the U.S. Post Office Department. Subsequently, West Coast Machinery has supplied the Government upwards of 15,000 vehicles for this use.

It has become apparent that there is a definite need for this type of vehicle in the ever expanding market in industry. The soaring cost of labor has made this type of economical, time saving unit a must in industrial, municipal, and recreational markets. Consequently, West Coast Machinery was acquired by Otis Elevator Company, March 9, 1970. Located in Stockton, California, on a 7-acre site at 1801 E. Charter Way, with plants in West Memphis, Arkansas; Cleveland, Ohio; and Stockton, California, Westcoaster manufactures a complete line of three and four wheel gasoline and electric vehicles.

SPECIFICATIONS

| | Model 960 HAUL MASTER | Model 965 TRAFFIC MASTER | Model 970-A4 TURF VEHICLE | Model 885 DELIVERY MASTER | Model 975 REFUSE VEHICLE | Model 970 TURF VEHICLE | Model 190C VIP |
|-------------------------------|--|---|--|---|---|---|--|
| OVERALL HEIGHT | 47" | 47" | 47" | 74½" | 55" | 47" | 36½" |
| SEAT HEIGHT (Floor) | 22¼" | 22¼" | 29" | 22¼" | 22¼" | 22¼" | 18¾" |
| LENGTH | 114¾" | 114¾" | 115" | 113¼" | 122" | 114¾" | 67½" |
| WIDTH | 52" Cargo Box | 51½" | 52" | 59" | 53" | 54½" | 25½" |
| WHEEL BASE | 81½" | 81½" | 79½" | 77" | 81½" | 81½" | 46½" |
| REAR WHEEL TREAD | 45" | 45" | 46¾" | 51" | 45" | 47" | 21" |
| GROUND CLEARANCE | 5" | 5" | 5" | 5" | 5" | 5" | 3½" |
| TURNING CIRCLE (Clearance) | 17'-6" | 17'-6" | 23' | 18'-0" | 17'-6" | 17'-6" | 59" Radius |
| WEIGHT | 970 lbs. | 1020 lbs. | 1020 lbs. | 1100 lbs. | 1220 lbs. | 1000 lbs. | 354 lbs. w/o Battery |
| TOP SPEED | 45 mph | 45 mph | 35 mph | 45 mph | 45 mph | 35 mph | 10.5 mph |
| STEERING | Automotive | Automotive | Automotive | Automotive | Automotive | Automotive | Tiller |
| MOTOR OR ENGINE | 18 H.P., Air-Cooled 4-Cycle | 18 H.P., Air-Cooled 4-Cycle | 18 H.P., Air-Cooled 4-Cycle | 18 H.P., Air-Cooled 4-Cycle | 18 H.P., Air-Cooled 4-Cycle | 18 H.P., Air-Cooled 4-Cycle | ¾ H.P., 24-V, DC |
| DIFFERENTIAL | Automotive Hypoid Drive | Automotive Hypoid Drive | Automotive Hypoid Drive | Automotive Hypoid Drive | Automotive Hypoid Drive | Automotive Hypoid Drive | Automotive Type |
| DRIVE OR TRANSMISSION | Automotive 3 Sp. For., 1 Rev. | Automotive 3 Sp. For., 1 Rev. | Automotive 3 Sp. For., 1 Rev. | Automotive 3 Sp. For., 1 Rev. | Automotive 3 Sp. For., 1 Rev. | Automotive 3 Sp. For., 1 Rev. | V-Belt and Chain |
| BRAKES | 3-Wheel Hydraulic 2-Shoe Bonded Lining | 3-Wheel Hydraulic 2-Shoe Bonded Lining | 2-Wheel Hydraulic 2-Shoe Bonded Lining | 3-Wheel Hydraulic 2-Shoe Bonded Lining | 3-Wheel Hydraulic 2-Shoe Bonded Lining | Hydraulic Internal Expanding on 2 Rear Wheels | Band-Type on Drive Line |
| ELECTRICAL SYSTEM | 12-Volt Starter, Regulator, 35-Amp Alternator | 12-Volt Starter, Regulator, 35-Amp Alternator | 12-Volt Starter, Regulator, 35-Amp Alternator | 12-Volt Starter, Regulator, 35-Amp Alternator | 12-Volt Starter, Regulator, 35-Amp Alternator | 12-Volt Starter, Regulator, 35-Amp Alternator | 24-V |
| SUSPENSION | Front: Coil Springs, Double Acting Shocks Rear: Coil Springs, Torsion Bar, Double Acting Shocks | Front: Coil Springs, Double Acting Shocks Rear: Coil Springs, Torsion Bar, Double Acting Shocks | Front: Coil Springs, Double Acting Shocks Rear: Coil Springs, Torsion Bar, Double Acting Shocks | Front: Coil Springs, Double Acting Shocks Rear: Coil Springs, Torsion Bar, Double Acting Shocks | Front: Coil Springs, Double Acting Shocks Rear: Coil Springs, Torsion Bar, Double Acting Shocks | Front: Coil Springs, Double Acting Shocks Rear: Coil Springs, Torsion Bar, Double Acting Shocks | Coil Springs Front and Rear |
| TIRES | 5.70-5.00 x 8—4 ply | 5.70-5.00 x 8—4 ply | 8.50 x 8—4 ply | 5.70-5.00 x 8—4 ply | 5.70-5.00 x 8—6 ply | Front: 8.00 x 6 Rear: 9.50 x 8 | 4.00 x 8 |
| STANDARD EQUIPMENT | Speedometer with Odometer Key Lock Ignition, Ammeter, Fuel Gauge, Oil Pressure Light, Head & Taillights | Completely Enclosed Fiberglass Box | Steel Cargo Box w/Slake Pockets | Cab Cargo Body Two Rear Doors | Dump Box | Fleetside Box | Batteries Built-in Charger Headlight Taillight & Horn |
| ACCESSORIES AND MODIFICATIONS | Cab, Directional Signals, Aux. Trans., Cargo Box, 2000# Payload | Cab, Siren, Plexiglass Windshield, X-Wide Cargo Box | Fiberglass Cab, Metal Doors w/Sliding Glass, Vinyl Cur- tains, Hydraulic Dump, Aux- iliary Transmission w/PTO | | Cab, Plexiglass Windshield | Aux. Trans. Hydraulic Dump Box, Cab | Rear Seat & Step |
| PAYLOAD | 1000 lbs. | 1000 lbs. | 2000 lbs. | 1500 lbs. | 1500 lbs. | 1000 lbs. | 450 lbs. |
| BED SIZE | 48 x 51½ x 12½ | 46 x 37¾ x 12 | 48" x 52" x 12½" | 65 Cubic Ft. Cargo Space | 49¾ x 26½ x 57 | 48 x 52 x 12½ | — |

| | Model 290S SUPERVISOR | Model 580F FREIGHT-AWAY | Model 584F FREIGHT-AWAY 4 | Model 580A IN-PLANT AMBULANCE | Model 580R-6 RESORTER | Model S-71 GOLF CART | Model S-40E EXECUTIVE |
|-------------------------------|---|---|---|---|---|---|---|
| OVERALL HEIGHT | 46" | 45" | 42" | 45" | 45" | 48" | 46" |
| SEAT HEIGHT (Floor) | 29" | 18½" | 18½" | 18½" | 18½" | 25" | 29" |
| LENGTH | 79" | 106¾" | 106¾" | 120" | 107" | 91" | 89½" |
| WIDTH | 36½" | 47" | 46" | 47" | 47" | 47" | 46¾" |
| WHEEL BASE | 50" | 75¾" | 59" | 75¾" | 75¾" | 61" | 62½" |
| REAR WHEEL TREAD | 32¾" | 40" | 40" | 40" | 40" | 35" | 34¼" |
| GROUND CLEARANCE | 5¼" | 6½" | 6½" | 6½" | 6½" | 5" | 5" |
| TURNING CIRCLE | 82" Outside Radius | 137" Outside Radius | 137" Outside Radius | 137" Outside Radius | 137" Outside Radius | — | — |
| WEIGHT | 448 lbs. w/o Battery | 930 lbs. w/o Battery | 930 lbs. w/o Battery | 970 lbs. w/o Battery | 930 lbs. w/o Battery | 740 lbs. w/o Battery | 740 lbs. w/o Battery |
| TOP SPEED | 10.5 mph | 10 mph | 10 mph | 10 mph | 10 mph | 12 mph | 12 mph |
| STEERING | Automotive—Ball Bearing Mounted | Automotive—Ball Bearing Mounted | Automotive—Ball Bearing Mounted | Automotive—Ball Bearing Mounted | Automotive—Ball Bearing Mounted | Automotive—Ball Bearing Mounted | Automotive—Ball Bearing Mounted |
| MOTOR OR ENGINE | 1½-H.P., 36-V, DC | 2-H.P., 36-V, DC | 2½-H.P., 36-V, DC | 2½-H.P., 36-V, DC | 2½-H.P., 36-V, DC | 2-H.P., 36-V, DC | 2-H.P., 36-V, DC |
| DIFFERENTIAL | Heavy Duty Automotive | Heavy Duty Automotive | Heavy Duty Automotive | Heavy Duty Automotive | Heavy Duty Automotive | Heavy Duty Automotive | Heavy Duty Automotive |
| DRIVE OR TRANSMISSION | V-Belt | V-Belt | V-Belt | V-Belt | V-Belt | Direct connected hypoid axle | V-Belt |
| BRAKES | 2-Wheel Hydraulic | 2-Wheel Hydraulic | 2-Wheel Hydraulic | 2-Wheel Hydraulic | 2-Wheel Hydraulic | Disc Type on Drive Line | Band-Type on Drive Line |
| ELECTRICAL SYSTEM | 36-V | 36-V | 36-V | 36-V | 36-V | 36-V | 36-V |
| SUSPENSION | Front: Aero Shock Rear: Combination Coil and Leaf Spring | Front: Aero Shock Rear: Combination Coil and Leaf Spring | Front and Rear: Combination Coil and Leaf Spring | Front: Aero Shock Rear: Combination Coil and Leaf Spring | Front and Rear: Combination Coil and Leaf Spring | Front: Knee Type with Leaf Spring Rear: Coil Springs & Torsion Bar | Front: Knee Type with Coil Springs Rear: Coil Springs & Torsion Bar, Stabilizer Bar |
| TIRES | 4.80 x 8—4 ply | 5.00 x 5.70 x 8 | 18 x 5.50-8 4 ply | 5.00-5.70 x 8 | 5.00 x 5.70 x 8 | 8.50 x 8 | 5.00 x 5.70 x 8 |
| STANDARD EQUIPMENT | Batteries Built-in Charger Semi-Automatic Time Clock, Headlight, Taillight & Horn | Batteries Built-in Charger Semi-Automatic Time Clock, Headlight, Taillight & Horn | Batteries Built-in Charger Semi-Automatic Time Clock, Headlight, Taillight & Horn | Batteries Built-in Charger Semi-Automatic Time Clock, Headlight, Taillight & Horn | Batteries Built-in Charger Semi-Automatic Time Clock, Headlight, Taillight & Horn | Golf Bag Racks, Batteries, Built-in Charger & Beverage holders | Headlight, Taillight, Horn, Batteries, Built-in Charger |
| ACCESSORIES AND MODIFICATIONS | Rear Seat & Step, Cab, Canopy | Cab, Stake Racks, Side Curtains | Cab, Metal Doors, Side Curtains | Cab, Shock Absorbers, Headlight | Canopy, Radio, Cigarette Lighter, Shock Absorbers, 9-Passenger | Vacuum Formed Plastic Canopy | Rear Seat & Step (4) Wheel |
| PAYLOAD | 450 lbs. | 1500 lbs. | 2000 lbs. | 1500 lbs. | 1500 lbs. | — | — |
| BED SIZE | 23½" x 35" | 46" x 60" | 46" x 75" | 90" x 28" | 24" x 46" | — | — |

All specifications subject to modification or improvement without prior notice.